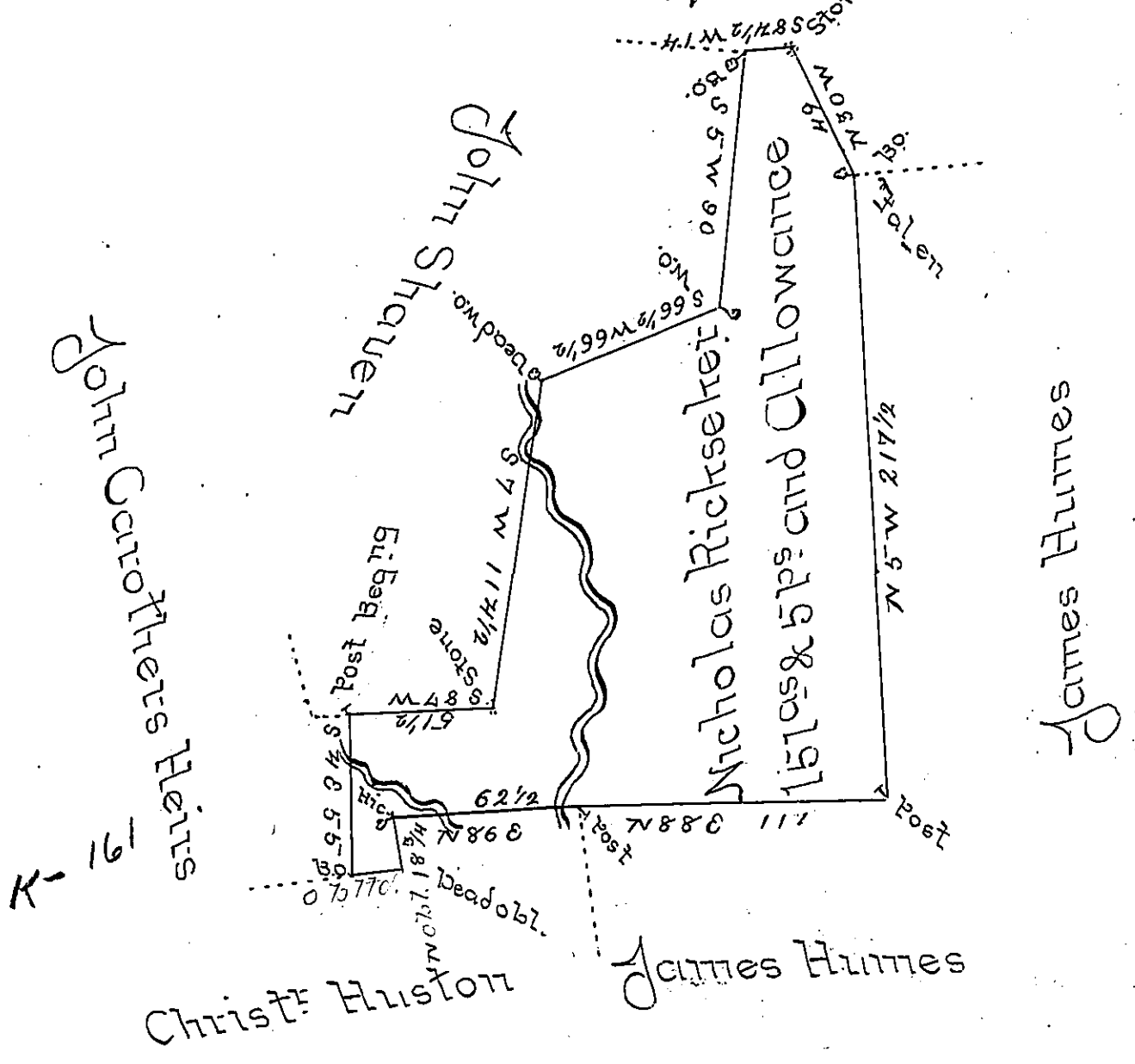


William Henry  
C-79-234



The Draught of a Tract of Land Situate in East Pennsborough Township Cumberland County Containing One Hundred and fifty one Acres and 5 Perches and Allowance of six Percent for Roads &c<sup>a</sup> Surveyed for Nicholas Rickseker the 16<sup>th</sup> Day of February 1787 In Pursuance of a Warrant from the Supreme Executive Council of the Commonwealth of Pennsylvania bearing Date at Philad<sup>a</sup> the 30<sup>th</sup> Day of January 1786.

per Saml Lyon D.S.

To John Lukens Esq<sup>t</sup> }  
Surveyor General }

IN TESTIMONY that the above is a copy of the original remaining on file in the Department of Internal Affairs of Pennsylvania, made conformably to an Act of Assembly approved the 16th day of February, 1833, I have hereunto set my Hand and caused the Seal of said Department to be affixed at Harrisburg, this sixth day of November 1899.

*James W. Pitta*  
Secretary of Internal Affairs.